

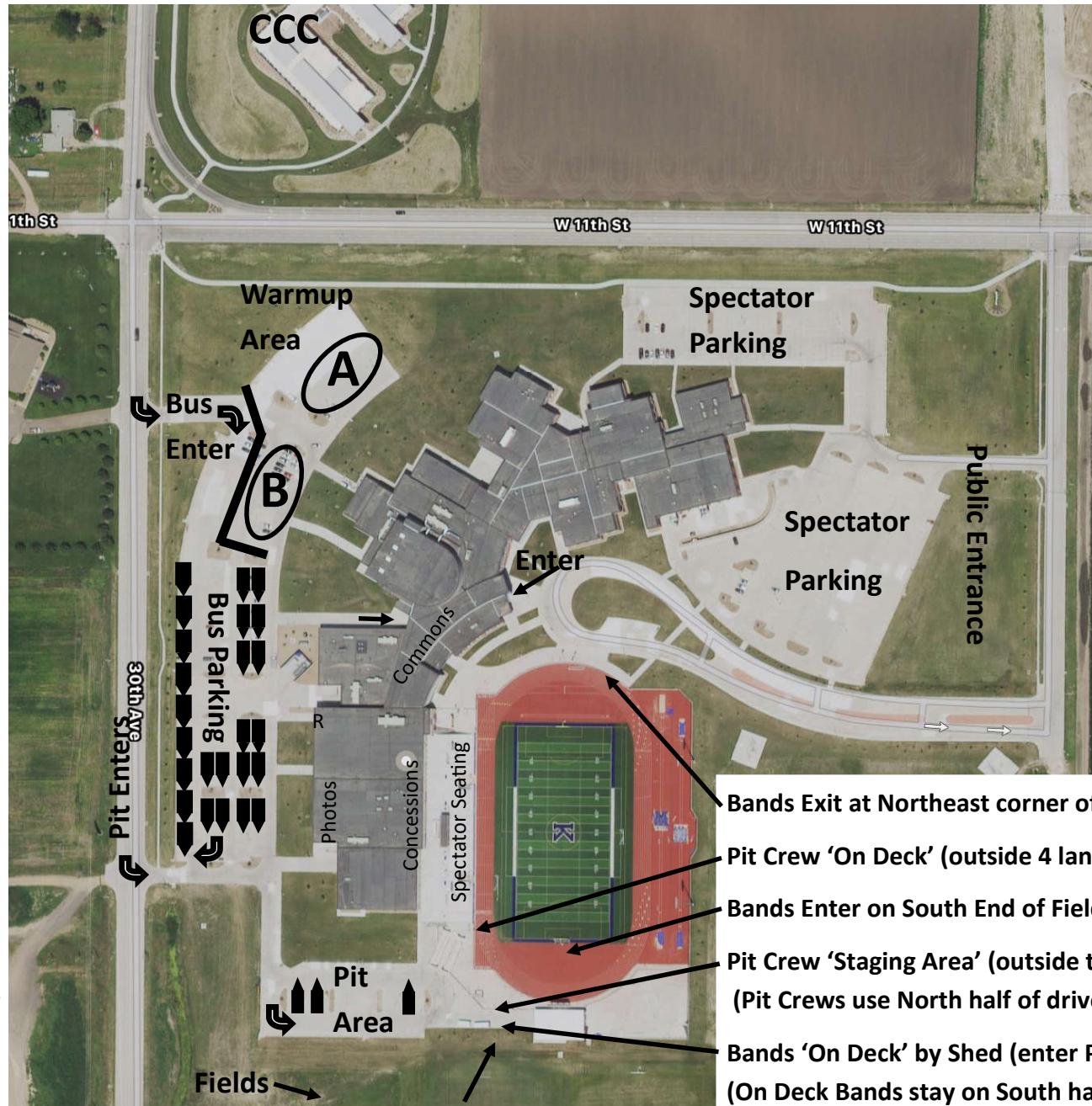
# BMF & NSBA - KEARNEY

At your designated time, go to the Warmup Areas (A/B). (Fields are available at the South end of the facility for body warmups - No playing.) After your Warmups, go to the 'On Deck' location by the Southwest entrance (by Pit Crew gate) and then enter field from South end.

After performance, Bands exit through the Northeast corner. At NSBA, proceed to the Gym for photos. Follow the Band escort.

Buses enter Parking lot on Northwest corner, turn South into lot and advance and park in North-South lines, facing South. Buses exit through the Southwest entrance on to 30th Ave North.

Pit Trailers and Trucks enter the Southwest corner and proceed to the Pit Area South of the building.

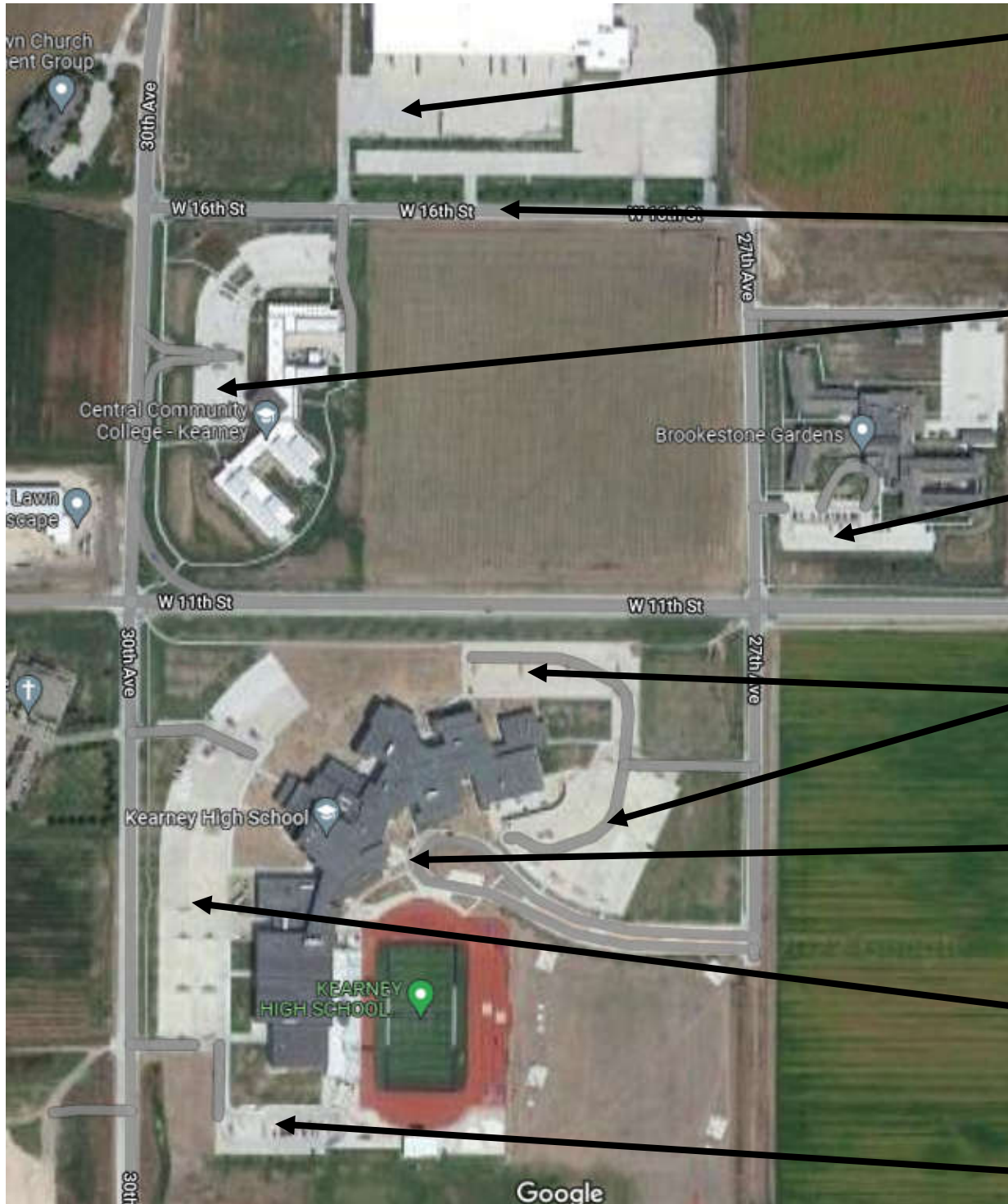


Pit Crews Enter & Exit on Southwest Corner

- Bands Exit at Northeast corner of Field
- Pit Crew 'On Deck' (outside 4 lanes)
- Bands Enter on South End of Field
- Pit Crew 'Staging Area' (outside the fence) (Pit Crews use North half of drive to stage)
- Bands 'On Deck' by Shed (enter Pit gate) (On Deck Bands stay on South half of drive)

<http://bit.ly/nsbakearney>

# PARKING



Buckle Warehouse  
Parking Lot.

Bus Overflow Parking

Overflow Guest Parking in  
CCC Parking Lot.  
Shuttle Service Available.

Guest Overflow Parking in  
Brookstone Gardens  
Retirement Parking Lot.  
Shuttle service available.

Guest/Spectator Parking in  
East KHS Lot.

Shuttle Drop-Off / Pick-Up  
for Performances on KHS  
football field. Entrance!

Only Buses, Pit Crews and  
Bands on West & South  
KHS Parking Lots.

Pit Crew Parking only.